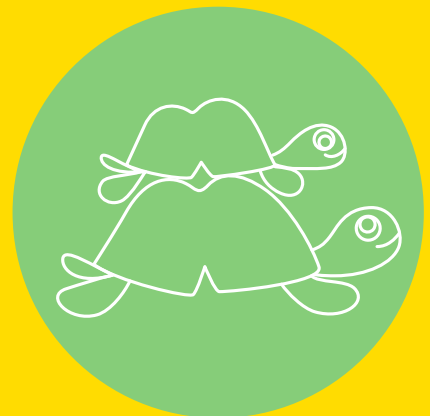
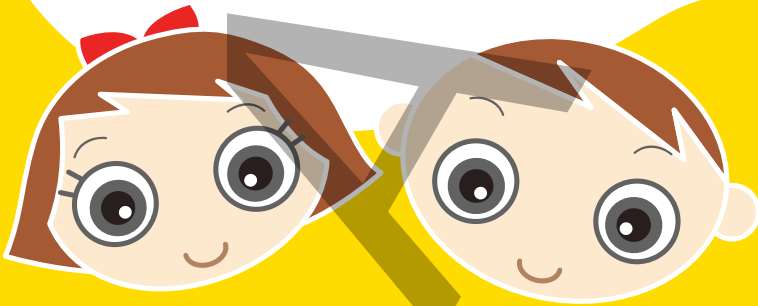




子どものための
英語文法ワークブック



Basic
English
Grammar
for Kids



M'S WORKBOOK



Can you find all words in the grid below?

つぎ なか した すべ ことば さが
(次の中から下の全ての言葉を探せるかな?)

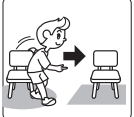
	t	r	s	p	y	y	f	k	s	d	
	e	e	r	t	u	u	q	o	t	k	
	g	s	e	x	u	s	b	o	e	w	
↓	l	e	a	r	n	d	h	l	a	k	↑
→	o	x	d	e	p	t	y	t	c	g	←
↖	x	s	v	j	y	p	c	t	h	l	↗
↙	n	o	n	p	s	h	w	a	r	d	↘
	m	y	a	e	l	o	k	l	a	w	
	m	d	n	j	q	e	z	w	z	c	
	f	d	p	i	c	k	h	m	g	d	



buy



help



move



read



teach



draw



learn



pick



send



walk



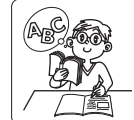
~~get~~



look



push



study



watch

しつもんぶん
《質問文》

Did ^{どうじょう}が登場したら
cleaned ⇒ clean にもどるよ!
he, she, it でも clean ✕ だよ!



I cleaned the room.

(わたしは^{へや}部屋をきれいにしました)



Say it!

Let's read the sentences.
^{ぶんよ} (文を読んでみよう!)

Did ^{さんしろう}サムライ参上!



Did I clean the room?

Did you clean the room?

Did he clean the room?

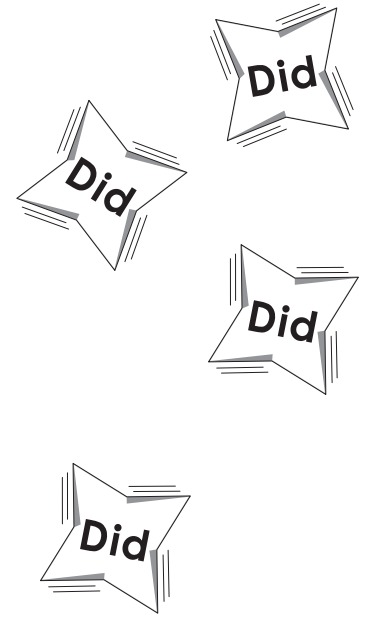
Did she clean the room?

Did it clean the room?

Did we clean the room?

Did you clean the room?

Did they clean the room?



へそまがりの『S』は
つかないよ!



しつもんぶん
《質問文》

Did が登場したら
ran ⇒ run にもどるよ!
he, she, it でも run だよ!



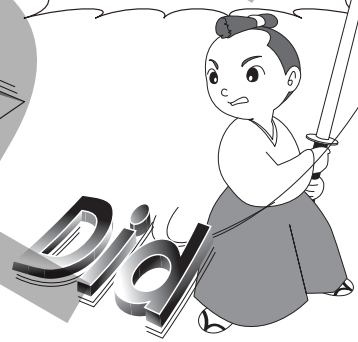
I ran in the park.

(わたしは公園を走りました)



Let's read the sentences.
ぶんよ (文を読んでみよう!)

Did サムライ参上!



Did I run in the park?

Did you run in the park?

Did he run in the park?

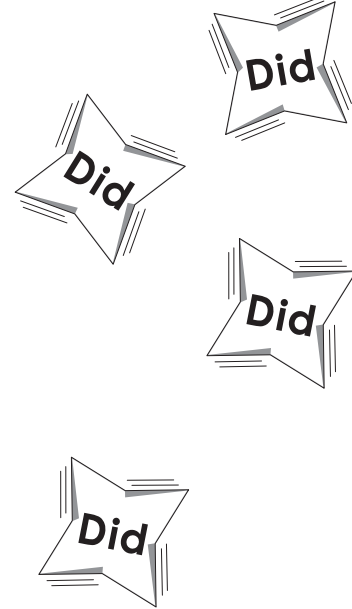
Did she run in the park?

Did it run in the park?

Did we run in the park?

Did you run in the park?

Did they run in the park?



へそまがりの『S』は
つかないよ!





Trace the words and write the correct Japanese on the line.

(_____ の英語をなぞって文を完成させよう! 英文と意味が合うように、日本語の文の _____
にも合う言葉を書こう!)

① Where are the pears?

They are next to the fridge.

(ナシは冷蔵庫の _____ です。)

② Where is the camera?

It is by the computer.

(カメラはコンピューターの _____ です。)

③ Where is the hospital?

It is beside the station.

(病院は駅の _____ です。)

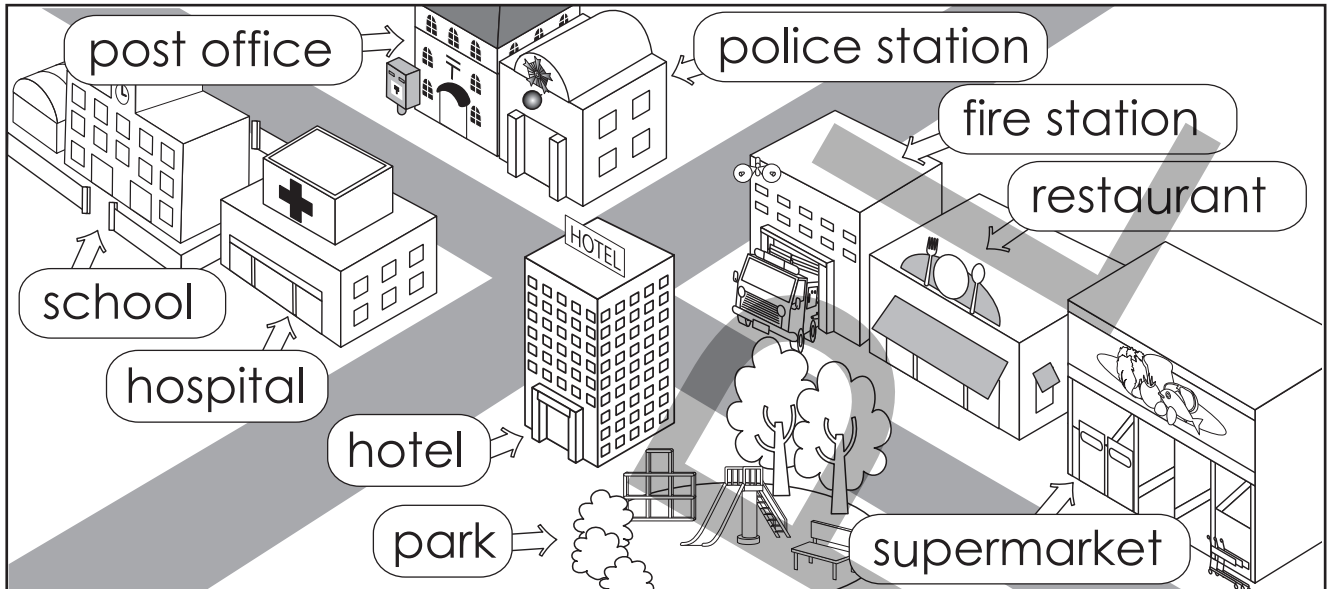
もんだい
スペシャル問題!!

Special Challenge



Look at the map and answer the questions by writing the correct words on the lines. (地図を見て問題に答えてみよう!)

こた ぶん の に当てはまる えいご を書いてみよう!



① What is next to the supermarket?

The _____ is next to the
supermarket.

② What is by the park?

The _____ is by the park.

③ What is beside the hospital?

The _____ is beside the
hospital.